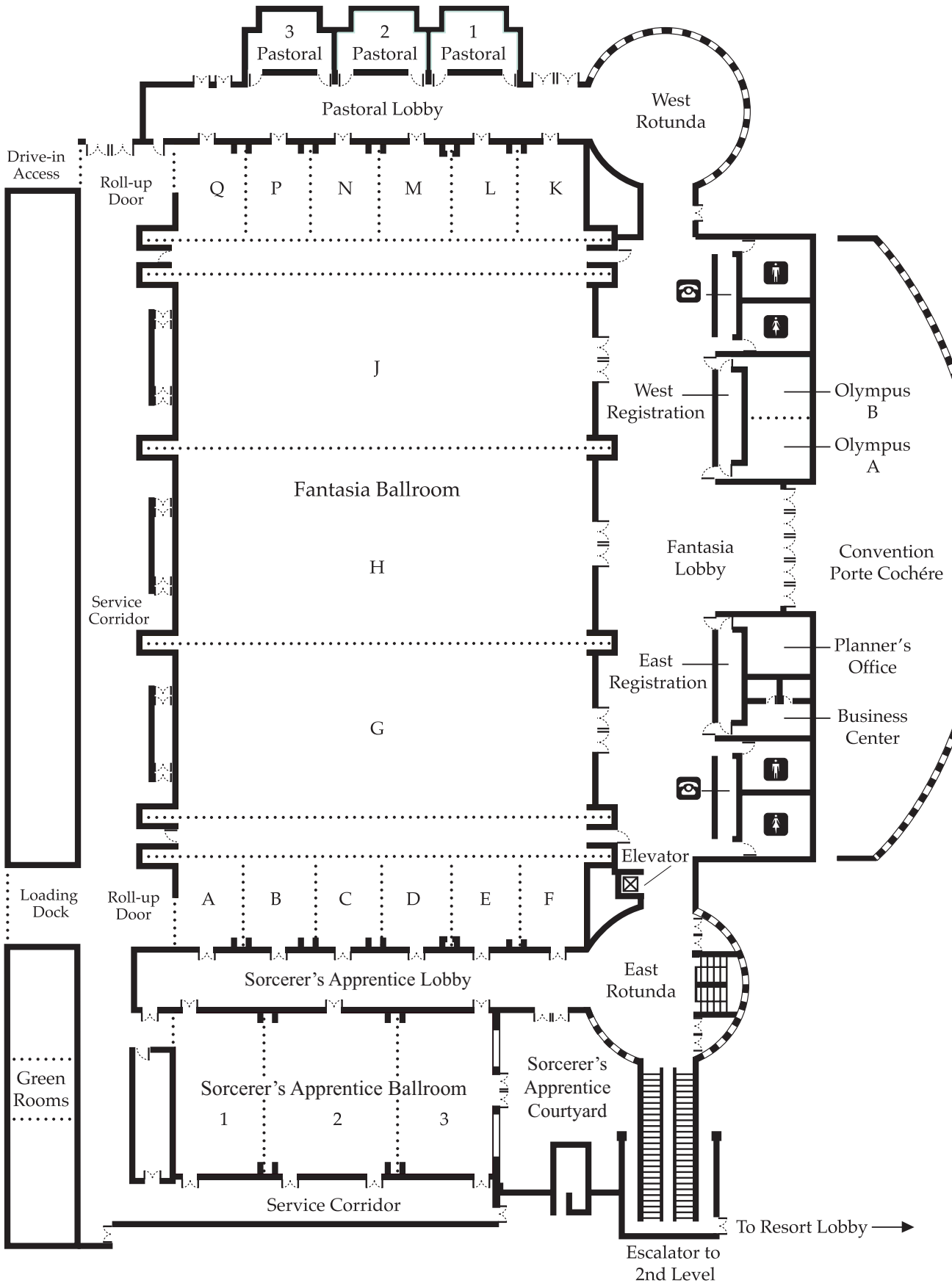


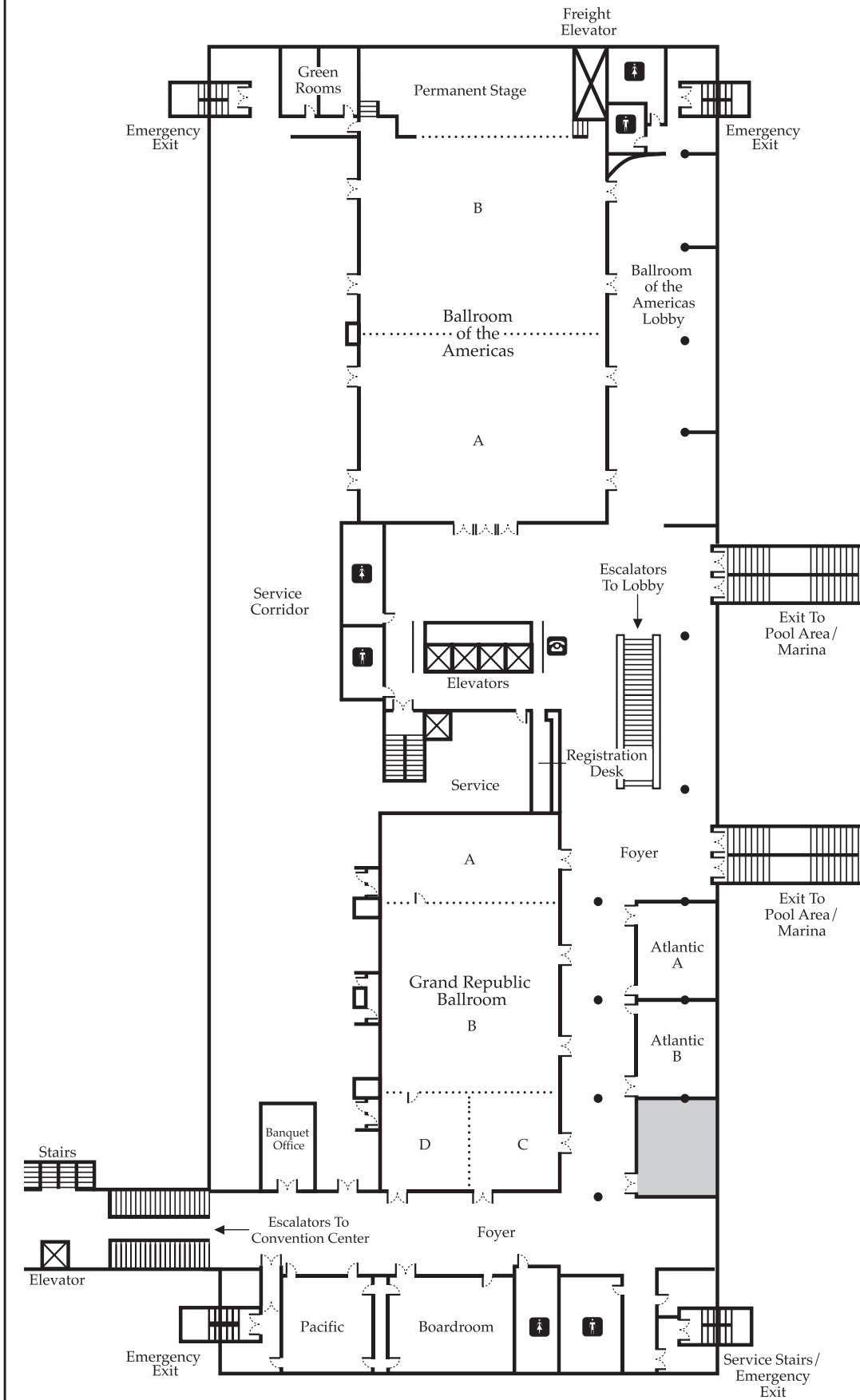
DISNEY'S CONTEMPORARY RESORT – MAIN LEVEL



DISNEY'S CONTEMPORARY RESORT – MAIN LEVEL

| Room Name | Square Feet | Width | Length | Ceiling Height | Entrance Width | Entrance Height | Theater | School Room | Conference | U-shape | Banquet Rounds | Reception |
|---------------------------------|-------------|-------|--------|----------------|----------------|-----------------|---------|-------------|------------|---------|----------------|-----------|
| Fantasia Ballroom | 42,336 | 294 | 144 | 26 | • | • | 4,050 | 2,280 | • | • | 3,120 | 4,720 |
| Fantasia G, H, J (each) | 10,488 | 152 | 69 | 26 | 15 | 8 | 1,090 | 580 | 120 | 120 | 720 | 1,100 |
| Fantasia G w/Salons A-F | 17,176 | 113 | 152 | 26 | 6'5" | 8 | 1,480 | 970 | 150 | 150 | 1,020 | 1,900 |
| Fantasia G w/Corridor | • | • | • | • | 15 | 8 | 1,090 | 610 | • | 100 | 720 | 1,100 |
| Fantasia J w/Salons K-Q | 17,176 | 113 | 152 | 26 | 6'5" | 8 | 1,480 | 970 | 150 | 150 | 1,020 | 1,900 |
| Fantasia J w/Corridor | • | • | • | • | 15 | 8 | 1,090 | 610 | • | 100 | 720 | 1,100 |
| Fantasia A-F, K-Q (each) | 816 | 24 | 34 | 20 | 6'5" | 8 | 65 | 45 | 20 | 25 | 50 | 86 |
| Sorcerer's Apprentice Ballroom | 7,068 | 114 | 62 | 20 | • | • | 734 | 413 | • | 140 | 500 | 744 |
| Sorcerer's Apprentice 1 | 2,294 | 37 | 62 | 20 | 6'5" | 8 | 238 | 124 | 52 | 54 | 120 | 240 |
| Sorcerer's Apprentice 2 | 2,480 | 40 | 62 | 20 | 6'5" | 8 | 250 | 134 | 52 | 54 | 180 | 260 |
| Sorcerer's Apprentice 3 | 2,294 | 37 | 62 | 20 | 6'5" | 8 | 238 | 124 | 52 | 54 | 180 | 240 |
| Pastoral 1 | 644 | 23 | 28 | 14 | 3 | 8 | 60 | 36 | 20 | 24 | 50 | 50 |
| Pastoral 2 | 667 | 23 | 29 | 14 | 3 | 8 | 60 | 36 | 20 | 24 | 50 | 50 |
| Pastoral 3 | 644 | 23 | 28 | 14 | 3 | 8 | 60 | 36 | 20 | 24 | 50 | 50 |
| Olympus A & B | 1,032 | 43 | 24 | 12 | • | • | 80 | 48 | 30 | 30 | 80 | 80 |
| Olympus A | 504 | 21 | 24 | 12 | 3 | 8 | 40 | 24 | 14 | 15 | 40 | 40 |
| Olympus B | 504 | 21 | 24 | 12 | 3 | 8 | 40 | 24 | 14 | 15 | 40 | 40 |
| Planner's Office | 352 | 16 | 22 | 12 | • | • | 20 | 15 | 8 | 6 | 10 | 20 |
| Fantasia Lobby | 9,009 | • | • | • | • | • | • | • | • | • | • | 550 |
| West Rotunda | • | • | • | • | • | • | • | • | • | • | • | 252 |
| Sorcerer's Apprentice Lobby | 3,344 | • | • | • | • | • | • | • | • | • | • | 352 |
| Pastoral Lobby | 3,492 | 24 | 145 | 24 | • | • | • | • | • | • | • | 210 |
| Outdoor Areas | | | | | | | | | | | | |
| Porte Cochère | • | • | • | • | • | • | • | • | • | • | 400 | 700 |
| Sorcerer's Apprentice Courtyard | • | • | • | • | • | • | • | • | • | • | 30 | 75 |
| Marina | • | • | • | • | • | • | • | • | • | • | 150 | 250 |
| South Beach | • | • | • | • | • | • | • | • | • | • | 400 | 800 |

DISNEY'S CONTEMPORARY RESORT – SECOND LEVEL



DISNEY'S CONTEMPORARY RESORT – SECOND LEVEL

| Room Name | Square Feet | Width | Length | Ceiling Height | Entrance Width | Entrance Height | Theater | School Room | Conference | U-shape | Banquet Rounds | Reception |
|--------------------------------|-------------|-------|--------|----------------|----------------|-----------------|---------|-------------|------------|---------|----------------|-----------|
| Ballroom of the Americas | 11,968 | 88 | 136 | 15 | 6 | 7'9" | 1,250 | 680 | 130 | • | 780 | 1,250 |
| Americas A | 5,808 | 88 | 66 | 15 | 5'8" | 7'9" | 600 | 330 | 70 | 70 | 400 | 600 |
| Americas B | 6,160 | 88 | 70 | 15 | 5'8" | 7'9" | 640 | 350 | 70 | 70 | 440 | 650 |
| Permanent Stage* | 1,166 | 40 | 29 | 21 | • | • | • | • | • | • | • | • |
| Grand Republic Ballroom | 8,710 | 65 | 134 | 9 | • | • | 950 | 480 | • | 150 | 620 | 800 |
| Grand Republic A | 2,275 | 65 | 35 | 9 | 6 | 6'10" | 196 | 120 | 50 | 51 | 100 | 190 |
| Grand Republic B | 4,290 | 65 | 66 | 15 | 6 | 6'10" | 460 | 260 | 59 | 65 | 300 | 450 |
| Grand Republic C | 1,024 | 32 | 32 | 9 | 6 | 6'10" | 80 | 30 | 18 | 25 | 50 | 100 |
| Grand Republic D | 1,024 | 32 | 32 | 9 | 6 | 6'10" | 80 | 36 | 18 | 25 | 50 | 100 |
| Grand Republic C & D | 2,080 | 65 | 32 | 9 | 6 | 6'10" | 170 | 120 | 52 | 58 | 100 | 200 |
| Atlantic A | 945 | 35 | 27 | 9 | 6 | 6'10" | 50 | 30 | 20 | 20 | 40 | 60 |
| Atlantic B | 945 | 35 | 27 | 9 | 6 | 6'10" | 50 | 30 | 20 | 20 | 40 | 60 |
| Pacific | 713 | 25 | 32 | 9 | 3 | 6'10" | 60 | 27 | 20 | 20 | 50 | 50 |
| Boardroom | 1,344 | 42 | 32 | 9 | 6'8" | 6'10" | • | • | 24 | • | • | 24 |
| Ballroom of the Americas Lobby | 4,216 | 34 | 124 | 8 | • | • | • | • | • | • | • | 290 |

*Permanent Stage is part of Ballroom of the Americas B and is included in the total square foot area.